

ORGANS

**WEAVER
ORGAN & PIANO
COMPANY**




YORK, PA. U.S.A.

RBR
ML597
W36a
TC



The
Winterthur
Library



Digitized by the Internet Archive
in 2010 with funding from
Lyrasis Members and Sloan Foundation

Remo Co.

4053

M. B. GIBSON, President CHAS. F. BAER, Vice-President
W. S. BOND, Sec'y and Treas.

Successful Experience
and Growth of over
Thirty Years

ESTABLISHED 1870

WEAVER ORGAN & PIANO INCORPORATED



447



FACTORY, WAREHOUSES
AND MAIN OFFICES

Broad and Walnut Sts.
YORK, PA., U. S. A.

19, 3024723

tech D-3

SEVEN YEARS WARRANTY

This is to Certify, That *Style No*

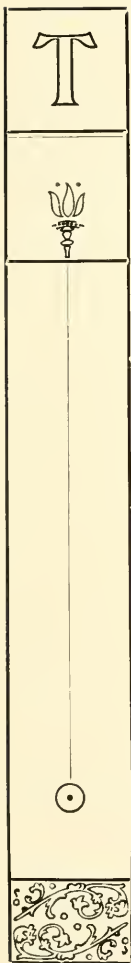
WEAVER ORGAN,

Manufactured by us, is in every respect a first-class instrument, and is warranted for the term of Six Years from date, and should it, with proper care and use, prove defective in material or construction within that time, we agree to put the same in good repair at our manufactory, or replace it with a new one.

York, Pa.,

1890

Weaver Organ & Piano Co.



THE manufacturers of the cheapest and most shoddy organs make such extravagant claims for superiority that it is a difficult task to give a description that will convince the reader of the actual worth of a strictly high-grade organ such as we manufacture. We prefer, therefore, to make no broad indefinite claims, but to state specifically the points wherein the Weaver Organs excel. They are as follows:

ACTION

1. Highest grade of materials and finest possible workmanship throughout, with all the most modern improvements and no unnecessary attachments to make the organ cumbersome.

2. Light elastic key-action, regulated to absolutely even touch and instantly responsive.

3. Finest tempered, double-riveted brass reeds, scientifically tuned and voiced by hand, giving distinctive character of tone to each set of reeds. The long double bend used in voicing gives the deep, clear, sympathetic tone

peculiar to the Weaver Organ. Voicing absolutely even throughout the scale.

4. Metal couplers, operating on pivots directly under the coupler boards, making them absolutely rigid, no matter how many keys are used at one time.

5. The torsion steel coppered wire springs bent at right angle on the bellows, pumpers are unbreakable, and make the pedals easier to operate in playing softly or with full organ, than in any other organ.

6. Double hinged fall-board which can be opened or closed from the centre or either end at any angle, without binding.

STOP ACTION

1. A perfectly noiseless stop action.

2. Stops are connected that each mute can be operated independent of the other.

3. The grand organ connection operates the mutes independent of the stop connections.

4. Minimum friction on the bearings and no metal joined to metal.

5. The crank pins attached to the mutes cross the line of centre in opening and closing the mutes, and make it impossible for any stop to open or close automatically, and the extendible connections are not affected by atmospheric changes.

6. Vox humana stop operates the mute to the proper set of reeds in connection with the fan.

CASE

1. Cases are dowelled, glued and screwed together, and all carvings are artistically done by hand. No pressed work.

2. The designs are artistic and every detail is worked out in a perfect manner by skilled mechanics.

3. Surface carefully prepared and finished with hand rubbed finish.

Description of Five Octave Actions

ACTION 5

Treble, 3 Octaves

1 Set Viola Reeds, 8 foot tone.

Bass, 2 Octaves

1 Set Diapason Reeds, 8 foot tone.

61 Reeds, Knee Swell, but no stop action.

This action placed only in Style Pearl Organ.

ACTION 10

Same as Action 5, but with stop action.

5 Stops—Viola, Diapason, Dulciana, Dulcet, Forte. This action placed in Dulcet, Viola or Ideal Organ.

ACTION 12

Treble, 3 Octaves

1 Set Viola Reeds, 8 foot tone.

Bass, 2 Octaves

1 Set Diapason Reeds, 8 foot tone.

5 Stops—Viola, Diapason, Dulciana, Dulcet, Coupler. 61 Reeds. Knee Swell also connects the coupler. Coupler couples right in treble and left in bass at same time. This action placed only in Pearl or Dulcet Organ.

ACTION 15

Treble, 3 Octaves

1 Set Viola Reeds, 8 foot tone.

Treble Coupler, coupling to right.

Bass, 2 Octaves

1 Set Diapason Reeds, 8 foot tone.

Bass Coupler, coupling to left.

6 Stops—Viola, Diapason, Dulciana, Dulcet, Treble Coupler, Bass Coupler. 61 Reeds. Grand Organ Swell and Knee Swell. This action placed in either Dulcet, Viola, Ideal or Unique Organ.

ACTION 20

Treble, 3 Octaves

- 1 Set Viola Reeds, 8 foot tone.
- 1 Set Aeolian Reeds, 8 foot tone.

Bass, 2 Octaves

- 1 Set Diapason Reeds, 8 foot tone.
- 1 Set Principal Reeds, 4 foot tone.

8 Stops—Viola, Vox Celeste, Aeolian, Vox Humana, Diapason, Dulcet, Principal, Echo. 122 Reeds. Grand Organ Swell and Knee Swell.

ACTION 30

Treble, 3 Octaves

- 1 Set Viola Reeds, 8 foot tone.
- 1 Set Aeolian Reeds, 8 foot tone.
- Treble Coupler, coupling to right.

Bass, 2 Octaves

- 1 Set Diapason Reeds, 8 foot tone.
- 1 Set Principal Reeds, 4 foot tone.
- Bass Coupler, coupling to left.

10 Stops—Viola, Vox Celeste, Aeolian, Vox Humana, Treble Coupler, Diapason, Dulcet, Principal, Echo, Bass Coupler. 122 Reeds. Grand Organ Swell and Knee Swell.

ACTION 50

Treble, 3 Octaves

- 1 Set Viola Reeds, 8 foot tone.
- 1 Set Aeolian Reeds, 8 foot tone.
- 1 Set Piccolo Reeds, 4 foot tone.
- Treble Coupler, coupling to right.

Bass, 2 Octaves

- 1 Set Diapason Reeds, 8 foot tone.
- 1 Set Principal Reeds, 4 foot tone.
- Bass Coupler, coupling to left.

12 Stops—Viola, Vox Celeste, Aeolian, Piccolo, Vox Humana, Treble Coupler, Diapason, Dulcet, Principal, Echo, Forte, Bass Coupler. 159 Reeds in all. Grand Organ Swell and Knee Swell.

ACTION 60

Treble, 3 Octaves

- 1 Set Viola Reeds, 8 foot tone.
- 1 Set Aeolian Reeds, 8 foot tone.
- 1 Set Piccolo Reeds, 4 foot tone.
- Treble Coupler, coupling to right.

Bass, 2 Octaves

- 1 Set Diapason Reeds, 8 foot tone.
- 1 Set Principal Reeds, 4 foot tone.
- 1 Set Sub Bass Reeds, (1 Oct.) 16 foot tone.

Bass Coupler, coupling to left.

12 Stops—Viola, Vox Celeste, Aeolian, Piccolo, Vox Humana, Treble Coupler, Diapason, Dulcet, Principal, Echo, Sub Bass, Bass Coupler. 172 Reeds in all. Grand Organ Swell and Knee Swell.

ACTION 70

Treble, 3 Octaves

- 1 Set Viola Reeds, 8 foot tone.
- 1 Set Aeolian Reeds, 8 foot tone.
- 1 Set Piccolo Reeds, 4 foot tone.
- 1 Set Saxaphone Reeds, 16 foot tone.
- Treble Coupler, coupling to right.

Bass, 2 Octaves

- 1 Set Diapason Reeds, 8 foot tone.
- 1 Set Principal Reeds, 4 foot tone.
- 1 Set Sub Bass Reeds, (1 Oct.) 16 foot tone.

Bass Coupler, coupling to left.

15 Stops—Viola, Wald Flue, Vox Celeste, Aeolian, Piccolo, Saxaphone, Vox Humana, Treble Coupler, Diapason, Dulcet, Principal, Echo, Sub Bass, Forte, Bass Coupler. 209 Reeds in all. Grand Organ Swell and Knee Swell.

Action 30, 50, 60, or 70 can be placed in any five octave organ we make.

All our actions are made in F. Scale, and the mutes are divided between the second and third octaves, thus giving the Treble more compass and evenness of tone than organs that are divided in the middle of the Key Board, besides adding seven more reeds to the Solo Sets of reeds just where they are most needed.

Description of Six Octave Actions

ACTION 630

A Six Octave Action same as Five Octave Action 30, with one extra octave of keys at treble end of organ, and reeds to correspond. 146 Reeds in all.

ACTION 650

Same as Five Octave Action 50, with one extra octave of keys at treble end, and reeds to correspond. 183 Reeds in all.

ACTION 660

Same as Five Octave Action 60, with one extra octave of keys at treble end, and reeds to correspond. 208 Reeds in all.

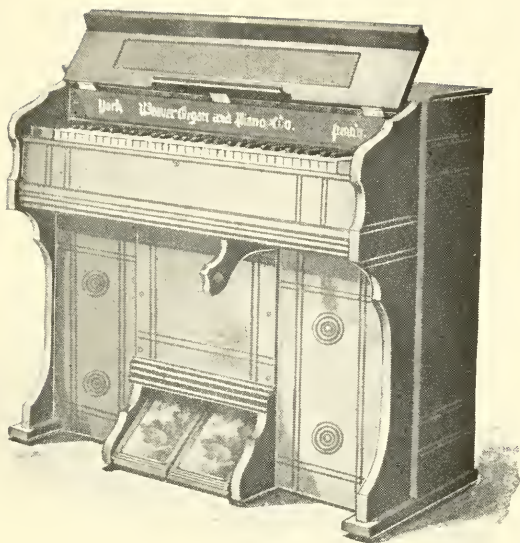
ACTION 670

Same as Five Octave Action 70, with one extra octave of keys at treble end, and reeds to correspond. 257 Reeds in all.

Any six octave action can be placed in either Unique, Favorite, Leader, Home, Parlor Upright, or Chapel 5 organ.

All our six octave actions are built in F scale, the entire sixth octave being added to the treble end of the keyboard, thus giving the performer the opportunity of rendering any piano music with ease, with almost the same keyboard compass in the treble as is found on the largest sized piano forte.

The actions in our organs are light, elastic and instantly responsive to the touch. Our six octave organs particularly have the reputation of being better adapted for playing piano music than any other six octave organs made.



STYLE PEARL

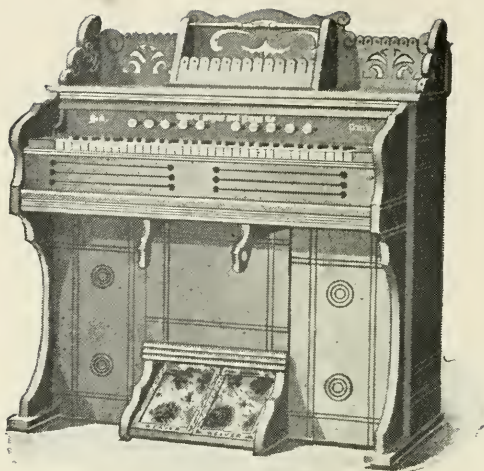
Solid Walnut or Oak Five Octaves

42 inches high. 43 inches long. 23 inches deep
161 lbs. net. 265 lbs. boxed. 31 cubic feet

Hand rubbed oil finish. Full sized keys, reeds, bellows and pedals. A marvel for depth and volume of tone. Just as carefully made, voiced and tuned as our most expensive styles.

Action 5, 12, 20 or 30 placed in this organ.

FULLY WARRANTED SIX YEARS



STYLE DULCET

Solid Walnut or Oak Five Octaves

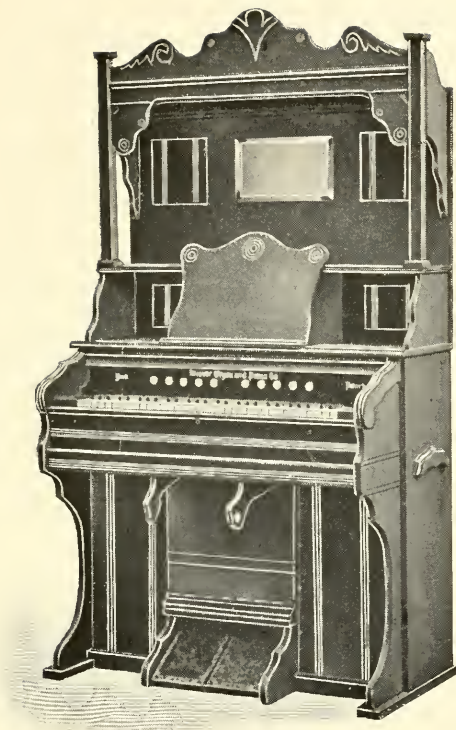
47 inches high. 43 inches long. 23 inches deep
163 lbs. net. 265 lbs. boxed. 31 cubic feet

Hand rubbed oil finish. Charming, full, round tone. Same quality as our most expensive styles. Neat music rest, sliding lid, convenient place for lamp.

This organ may be had with neatly paneled back in solid walnut or solid oak, finished same as the front at additional cost

Action 10, 15, 20 or 30 placed in this organ.

FULLY WARRANTED SIX YEARS



STYLE MASCOT

Solid Oak Only

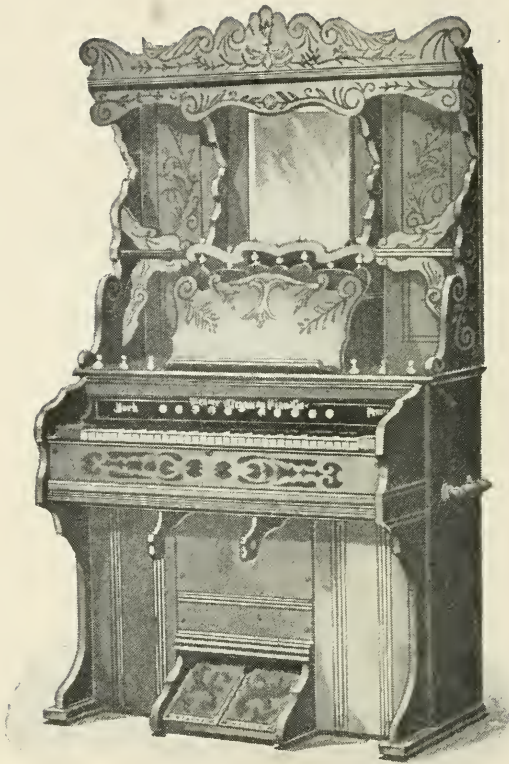
Five Octaves

75 inches high. 43 inches long. 23 inches deep
200 lbs. net. 325 lbs. boxed. 49 cubic feet

Hand rubbed oil finish. Beveled plate glass mirror. Music pocket back of hinged desk, sliding lid, convenient place for lamp.

Action 10, 15, 20 or 30 placed in this organ.

FULLY WARRANTED SIX YEARS



STYLE IDEAL

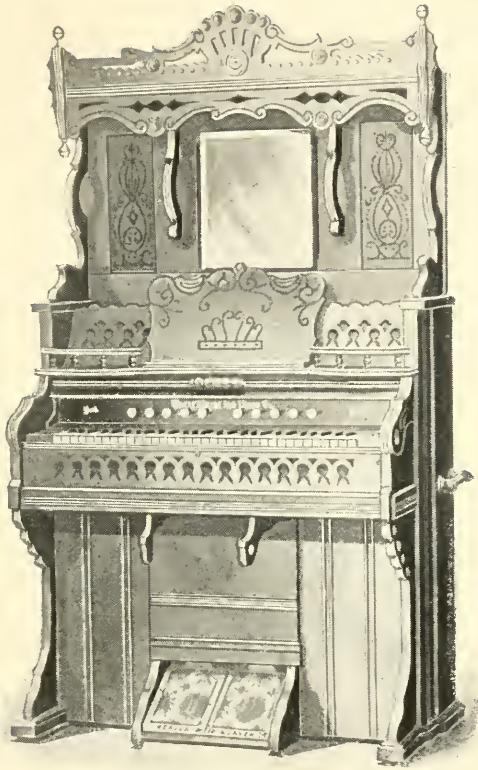
Solid Walnut or Oak Five Octaves

77 inches high. 45 inches long. 23 inches deep
200 lbs. net. 370 lbs. boxed. 49 cubic feet

Hand rubbed oil finish. Beveled plate glass mirror 14x16 in. Closed music pocket, sliding lid, convenient place for lamp.

Action 15, 20, 30 or 50 placed in this organ.

FULLY WARRANTED SIX YEARS



STYLE UNIQUE

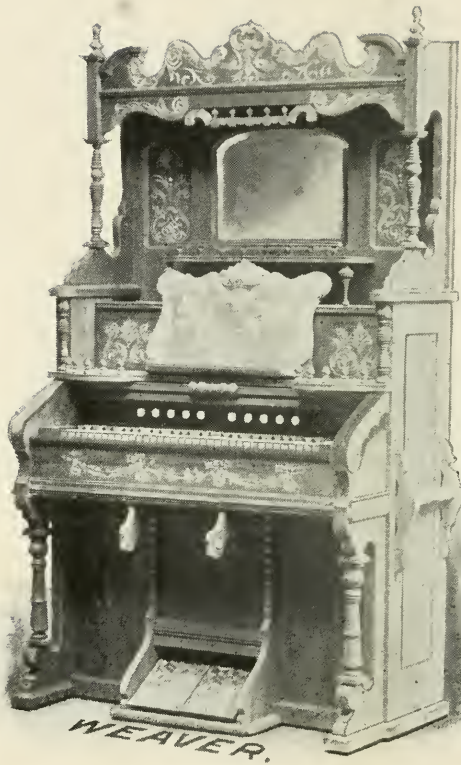
Solid Walnut or Oak 5 or 6 Octaves

77 inches high. 48 inches long. 23 inches deep
195 lbs. net. 370 lbs. boxed. 52 cubic feet
Six Octave Unique is 54 in. long and 225 lbs.
net.

Hand rubbed oil finish. Beveled plate
glass mirror 14x16 in. Closed music
pocket, sliding lid, safety lamp stand.

Any five or six octave action.

FULLY WARRANTED SIX YEARS



STYLE FAVORITE

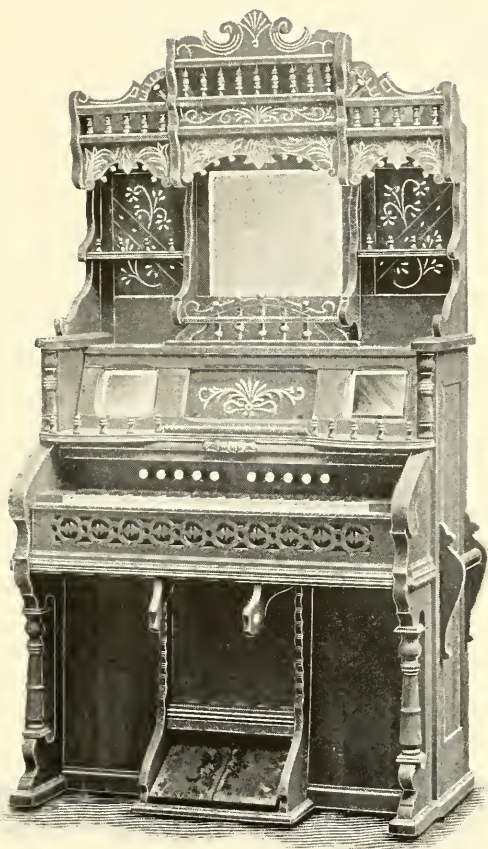
Solid Walnut or Oak 5 or 6 Octaves

81 inches high. 49 inches long. 24 inches deep
235 lbs. net. 390 lbs. boxed. 57 cubic feet

Hand rubbed oil finish. Beveled plate glass mirror. Large closed music pocket, sliding lid, safety lamp stand.

Any five or six octave action.

FULLY WARRANTED SIX YEARS



STYLE LEADER

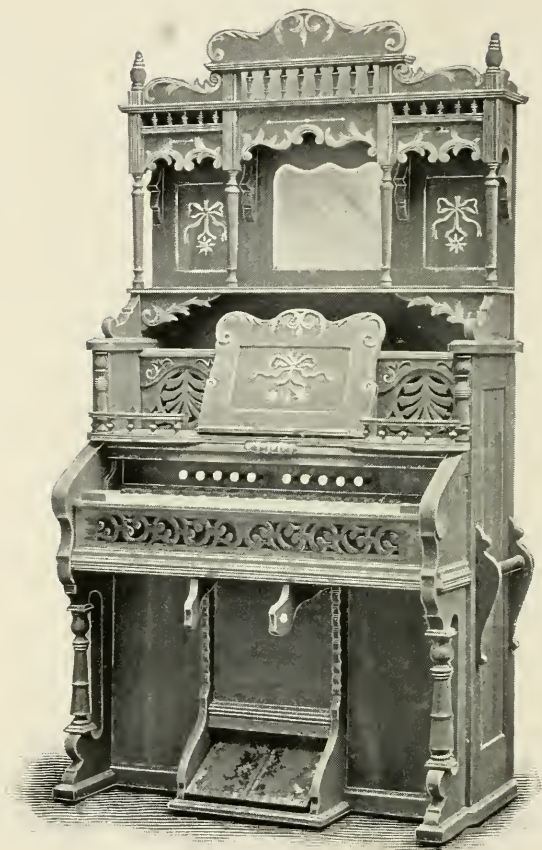
Sold Walnut or Oak 5 or 6 Octaves

81 inches high. 49 inches long. 24 inches deep
235 lbs. net. 420 lbs. boxed. 52 cubic feet
Six Octave Leader is 56 in. long, 250 lbs. net.

Hand rubbed oil finish. Three beveled
plate glass mirrors. Closed music pocket,
sliding lid, safety lamp stand.

Any five or six octave action.

FULLY WARRANTED SIX YEARS



STYLE HOME

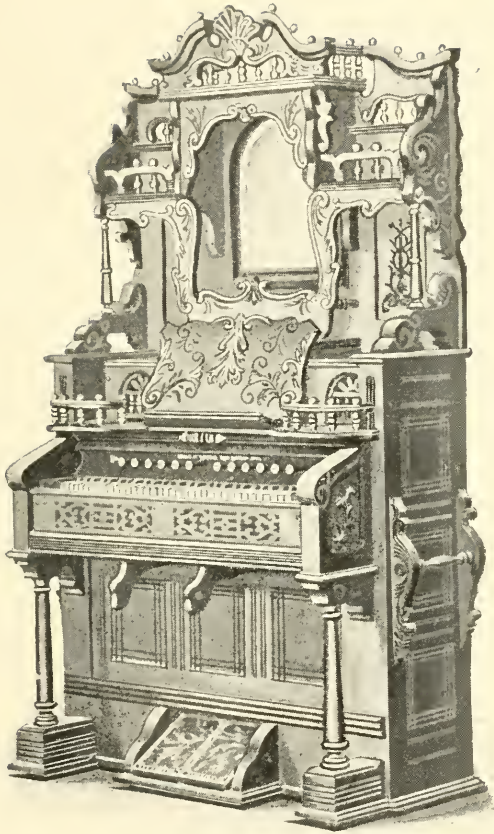
Solid Walnut or Oak 5 or 6 Octaves

84 inches high. 49 inches long. 24 inches deep
210 lbs. net. 425 lbs. boxed. 56 cubic feet
Six Octave Home is 56 in. long, 260lbs. net.

Hand rubbed oil finish. Beveled plate
glass mirror 12x14 in. Large music
pocket, sliding lid, safety lamp stands.

Any five or six octave action.

FULLY WARRANTED SIX YEARS



STYLE SUPERB

Solid Walnut

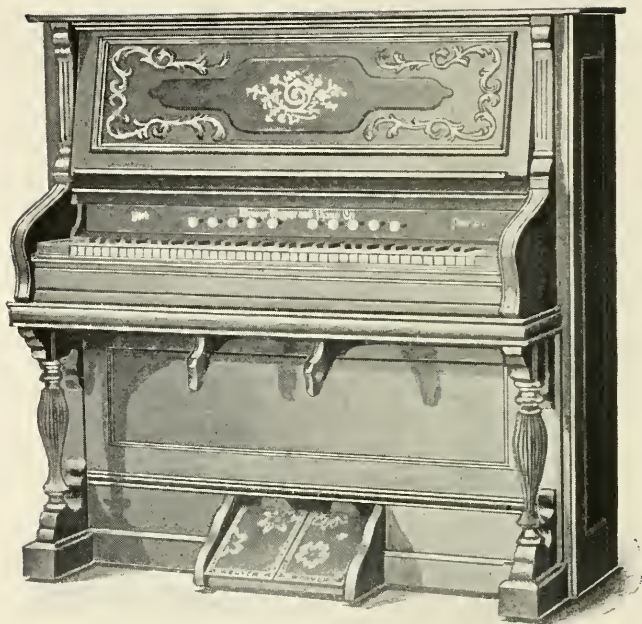
Five Octaves Only

84 inches high. 49 inches long. 24 inches deep
285 lbs. net. 490 lbs. boxed. 60 cubic feet

Hand rubbed oil finish. Beveled plate
glass mirror 14x18 in. Large music
pocket, safety lamp stands, sliding lid.

Any five octave action.

FULLY WARRANTED SIX YEARS



PARLOR UPRIGHT ORGAN

Solid Walnut, Cherry or Oak

Six Octaves Only

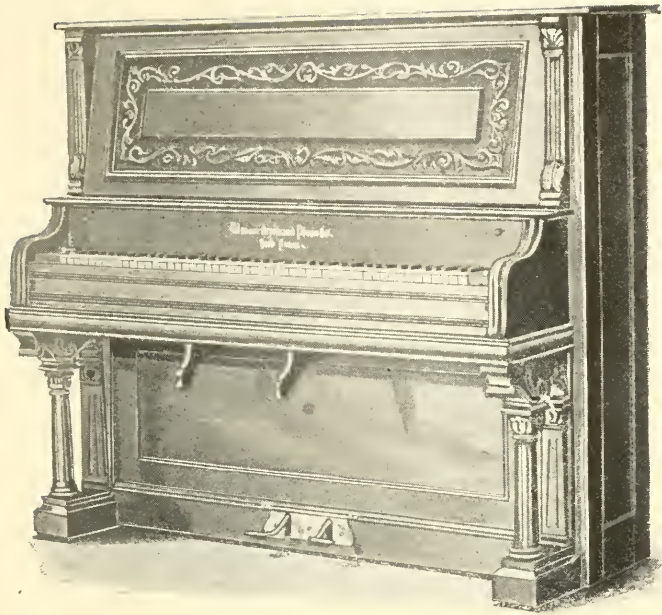
55 inches high. 54 inches long. 24 inches deep
235 lbs. net. 450 lbs. boxed. 57 cubic feet

Highly polished piano finish. Large music closet. Duet front opens automatically with sliding lid.

This organ has regular organ pedals and stop action and is in better control of the player and less tiresome to operate than any organ with piano pedals.

Any six octave action.

FULLY WARRANTED SIX YEARS



CABINET UPRIGHT ORGAN

Solid Walnut, Oak or Cherry

7 1-3 Octaves

54 inches high. 63 inches long. 25 inches deep
 268 lbs. net. 485 lbs. boxed. 67 cubic feet

ACTION

2 sets 8 foot reeds and one set 16 foot Saxophone Reeds, 4 and 2-3 octaves each, in treble.

1 set 8 foot reeds and one set 4 foot reeds, 2 and 2-3 octaves, in base.

Divided octave couplers. 3 small nickel-plated stops.

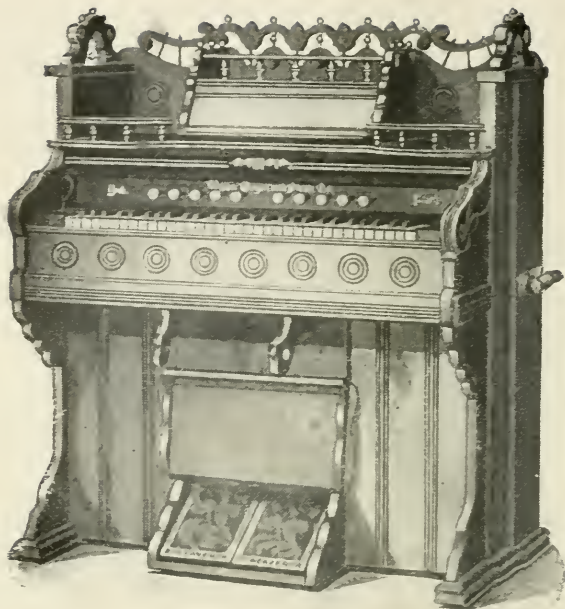
Grand Organ lever and knee swell. Piano pedals. 232 reeds in all.

Highly polished piano finish. Large music pocket back of duet front, opening automatically with Boston fall board.

Light, elastic and instantly responsive action.

Finest 7 1-3 octave organ made anywhere
 Far better than a cheap piano.

FULLY WARRANTED SIX YEARS



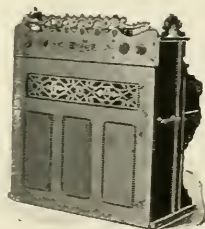
CHAPEL THREE

Solid Walnut or Oak Five Octaves

48 inches high. 45 inches long. 23 inches deep
 190 lbs. net. 350 lbs. boxed. 45 cubic feet

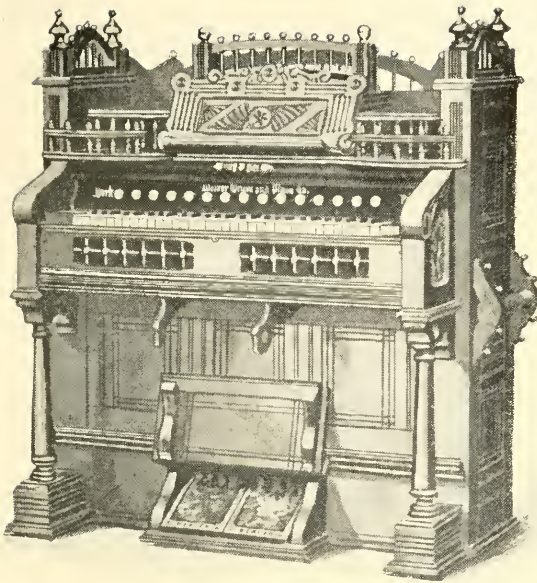
Hand rubbed oil finish.
 Mouse proof pedal cover,
 sliding lid, safety lamp
 stand. Closed music pocket.
 Back finished same as
 front.

Any five octave action.



Back

FULLY WARRANTED SIX YEARS



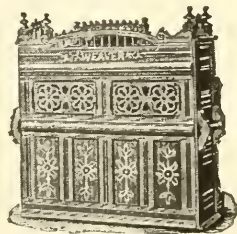
CHAPEL FIVE

Solid Walnut or Oak 5 or 6 Octaves

54 inches high. 50 inches long. 25 inches deep
 240 lbs. net. 420 lbs. boxed. 51 cubic feet

Hand rubbed oil finish.
 Sliding lid, safety lamp
 stands. Closed music
 pocket.

Back finished same as
 front.



Back

Any five or six octave action.

FULLY WARRANTED SIX YEARS

Let These Speak For Us

"I have sold the **Weaver Organ** for the past ten years, and have found them the best sellers on the market. They also give the best satisfaction in after years."

H. E. MORRIS,

August 15 1930.

Eugene, Oregon.

"After examining all the prominent makes exhibited at the National Export Exposition, at Philadelphia, Pa., I found the instrument I have longed for in the **Weaver Organ**, and decided to purchase one for my own personal use, and it delights myself and my pupils. It has a clear, sweet, yet powerful tone, perfectly even throughout the scale, and is quick in expression. It is in constant use when I am at my studio, and gives the best of satisfaction."

EDWARD VAN LOOCK,

Washington, D. C.

October 12, 1900.

Teacher of Harmony and Solfege.

First Clari net player in
U. S. Marine Band.

"The selection of the **Weaver Organ** for our schools by the committee on music, from among the many on trial, was well deserved, and received the hearty approval of all present when tested.

"Its tone is pure and full; its mechanism strong and abreast of the times. The bellows furnish ample supply of air and need no forcing, and the selection of the stops makes it a most valuable instrument."

JOHN G. WEHAGE,

Baltimore, Md.

April 18, 1892.

Supt. of Music in Public Schools.

**There are over 60 Weaver Organs in use
in the Public Schools of Baltimore City.**

"I am much pleased with the **Weaver Organs**. They are easy to sing with in accompaniment and the tone is very sweet and full."

IRA D. SANKEY.

"You have certainly given us a fine organ for the money paid, and we shall all feel under obligations to you for treating us so handsomely." Very truly yours,

Etna, N. J. REV. J. ALFRED ACKERMAN.

May 5, 1898.

"This company may well boast of making one of the finest actions in use, as well as one of the easiest to operate. They use the finest material the market affords, and pay the closest attention to every detail in the making of their actions. Their excellent workmanship, fair and square dealing, and upright business methods have won for the **Weaver Organ & Piano Co.** a name of which they may justly feel proud."

THE MUSIC TRADES.

New York.

FINEST ORGAN "As we travel about from place to place in Evangelistic work, we have been obliged to use almost every known make of Reed Organs, but we have never used an instrument that has afforded us so much pleasure and satisfaction as the **Weaver Organ**. It is light in action, responds instantly to the touch, and for quality of tone is unsurpassed."

MRS. AND MR. J. J. LOWE,

Philadelphia, Pa. Gospel Singers.

STRONGEST ORGAN The extremely damp
MECHANICALLY climate of eastern

Texas, near the Gulf and the extremely dry climate of Western Texas, Arizona and southern California, will give the severest test to any Organ or Piano. Only the most thoroughly seasoned wood and the most careful gluing and workmanship will stand. I sold a number of the **Weaver Organs** in both these climates over 12 years ago with the six year guaranty you furnish. I do not know of a higher tribute to your organs than to say that I have yet to learn of the first one which has failed to give the highest satisfaction.

New York,
May 4, 1898.

J. L. KELLOGG.

"The Weaver Organ stands among the best manufactured. The voicing of the reeds is particularly smooth and even; the arrangement of the stops the most sensible I have seen. The design of the case is tasteful, and altogether I take great pleasure in adding my testimony to the genuine worth of the instrument."

THEODORE PRESSER.

Philadelphia, Pa.
May 17, 1894.

Editor of "THE ETUDE," an Educational Magazine of Music for Teachers and others.

"I wish to bear most cheerful testimony to the excellence of your fine instruments. Being present at so many church dedications, I quite frequently hear of the **Weaver Organ**, and have heard only universal praise as to its merits. I would advise any church or school or any individual needing an organ, by all means get the **Weaver**."

(Rev.) H. H. WEBER,

York, Pa.,
January 20, 1899.

General Secretary Board of Church Extension of the General Synod Lutheran Church of the U. S.

The **Weaver Organ & Piano Co.** has for years been one of the most substantial and prosperous manufacturing corporations of our city, and is an institution that is worthy of the entire confidence of the people in our own community as well as abroad.

July 28, 1899.

"YORK DAILY."

THEY NEVER WEAR OUT The second-handed **Weaver Organs** we take in exchange for **Pianos** are about as good as new. We have one now that has been used twelve years and it's fine.

Wilkes-Barre, Pa., **J. S. HOMADIEU & SON.**
January 15, 1900.



